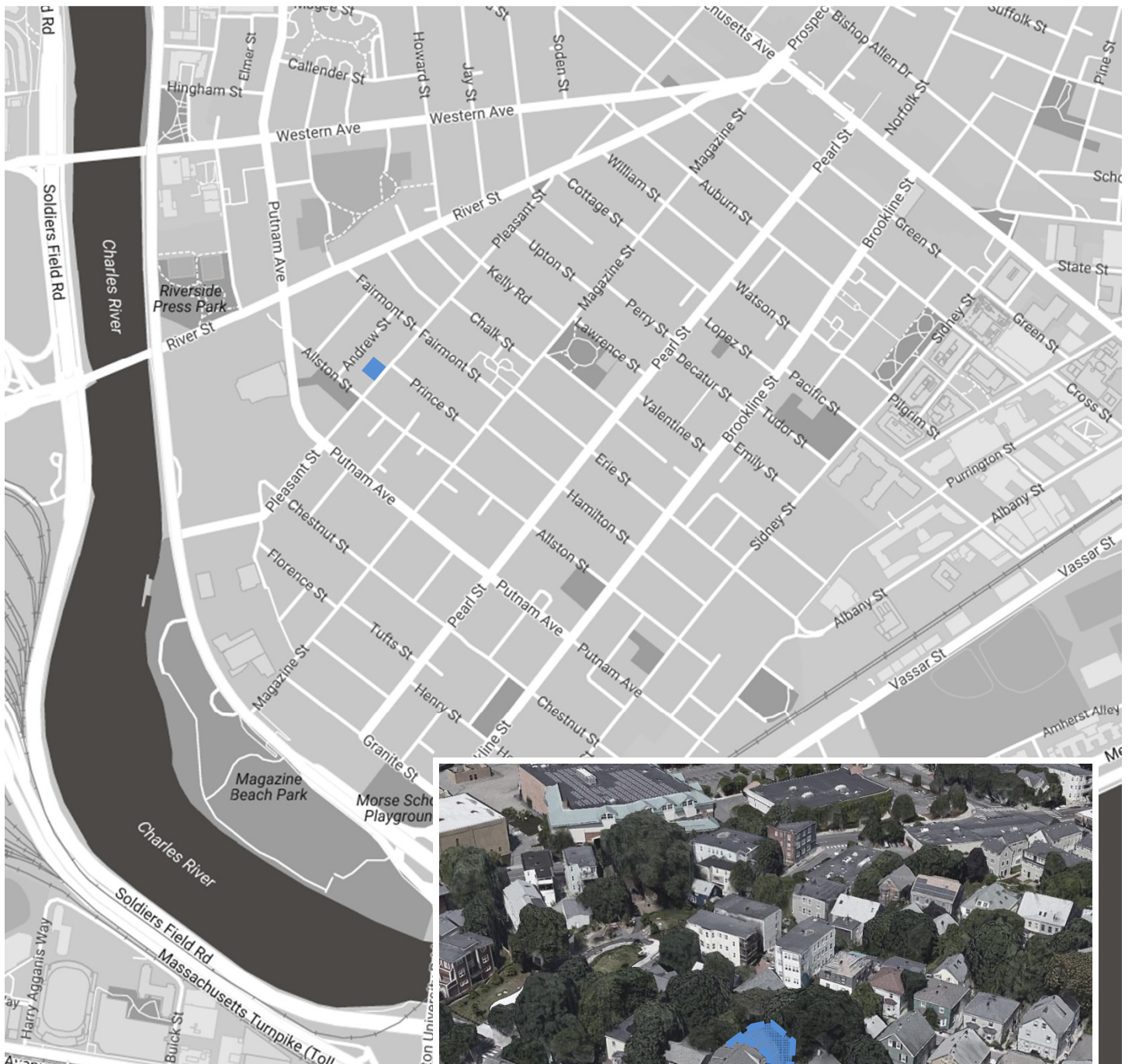




117 Pleasant Street | Cambridge, MA



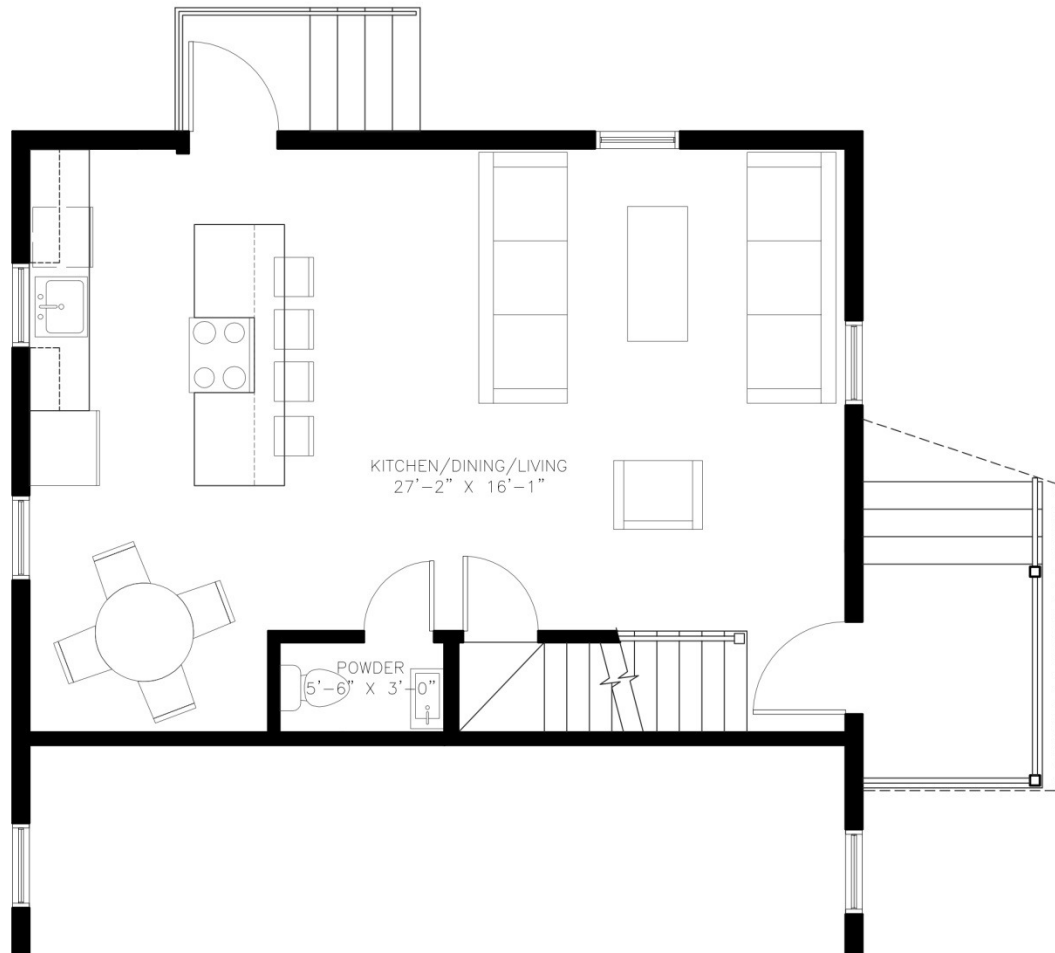
- Premier Cambridgeport Location
- Easy access to Mass Pike / Storrow Drive
- 10 min walk to Central Square T
- Walking Distance to Harvard / MIT

117 Pleasant Street | Cambridge, MA
February 23, 2018





BASEMENT PLAN
505 SF; 7'-0" Ceiling

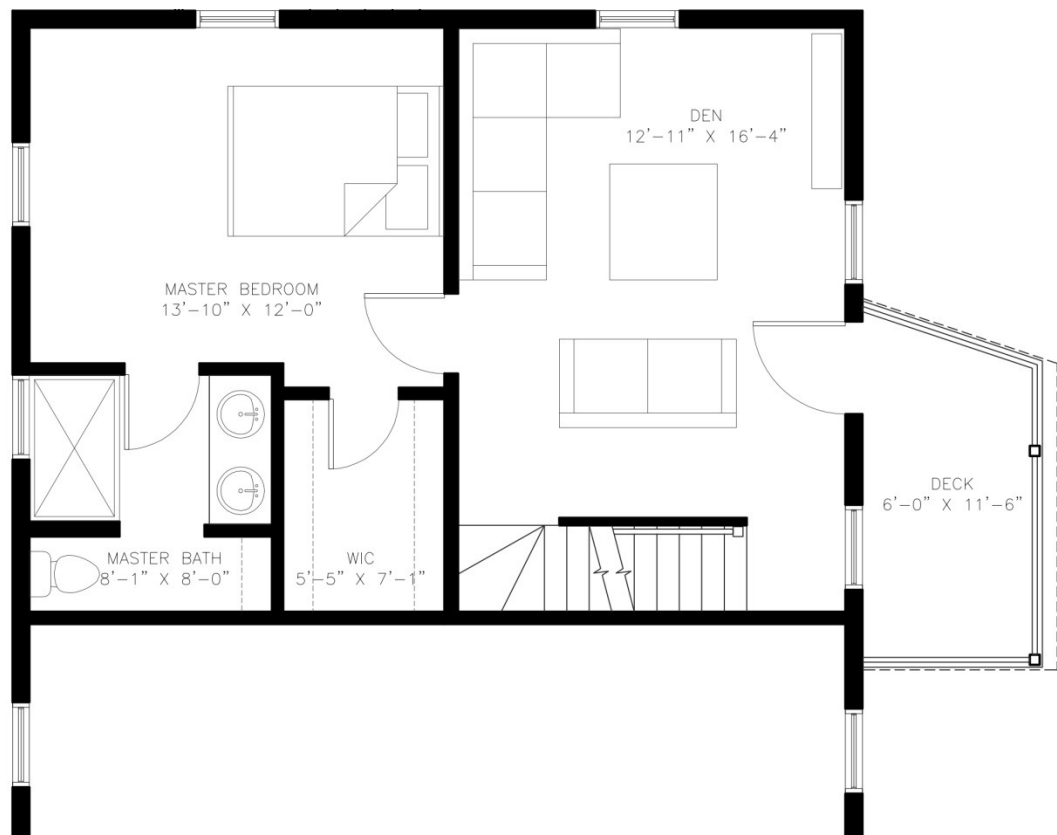


FIRST FLOOR PLAN
530 SF; 8'-3" Ceiling

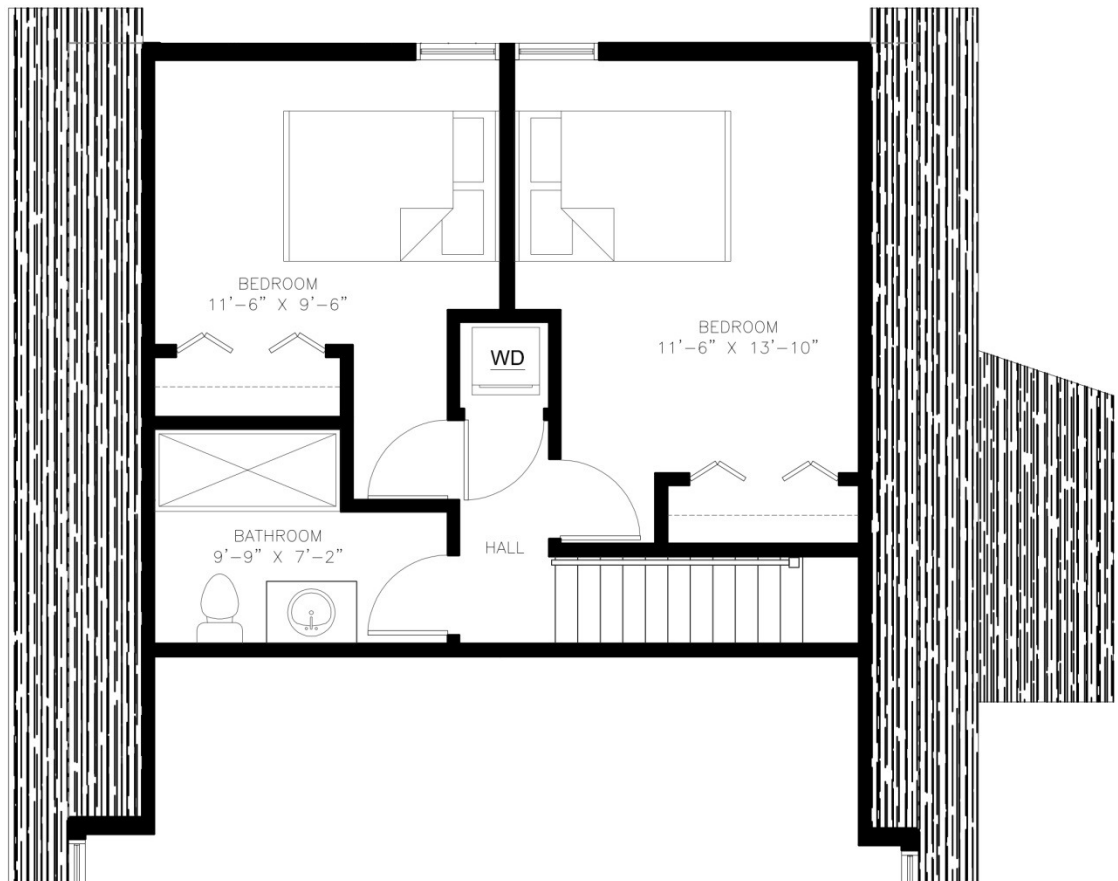
**see alternate layouts attached*

117 Pleasant Street | Cambridge, MA
February 23, 2018





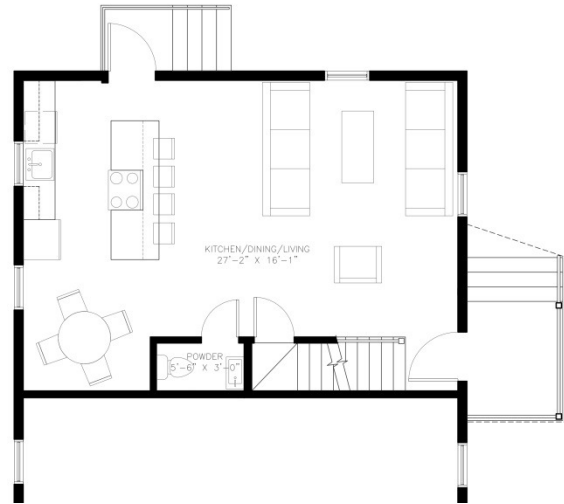
SECOND FLOOR PLAN
530 SF; 7'-10" Ceiling



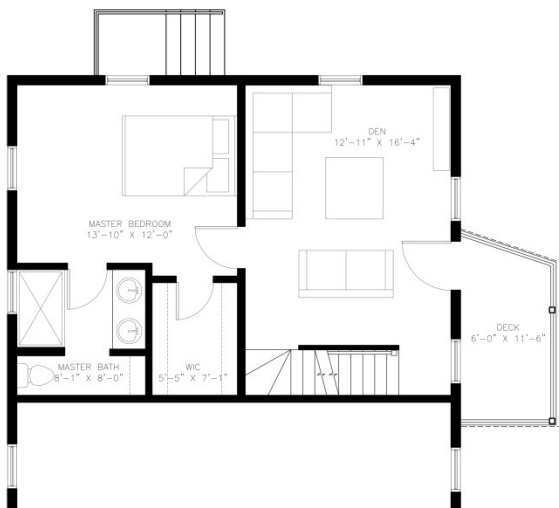
THIRD FLOOR PLAN
456 SF; 7'-6" Ceiling



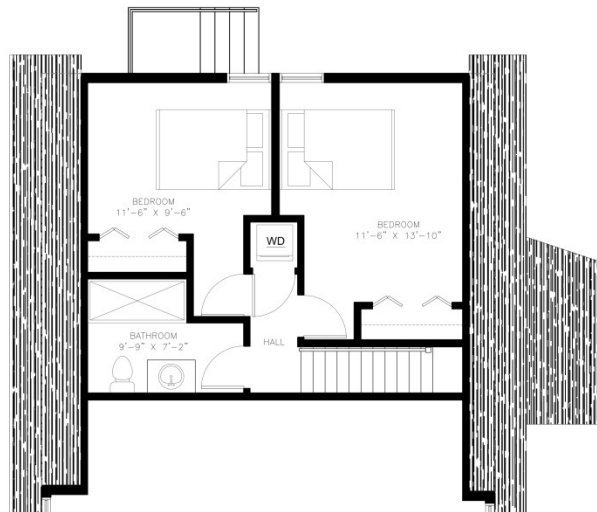
BASEMENT



FIRST



SECOND



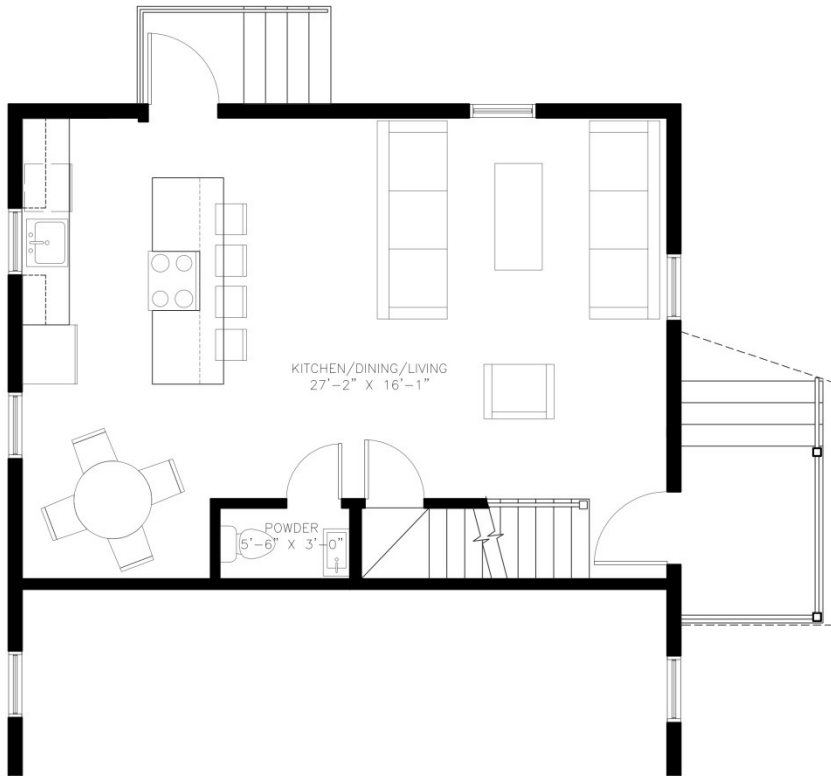
THIRD

Unit Highlights

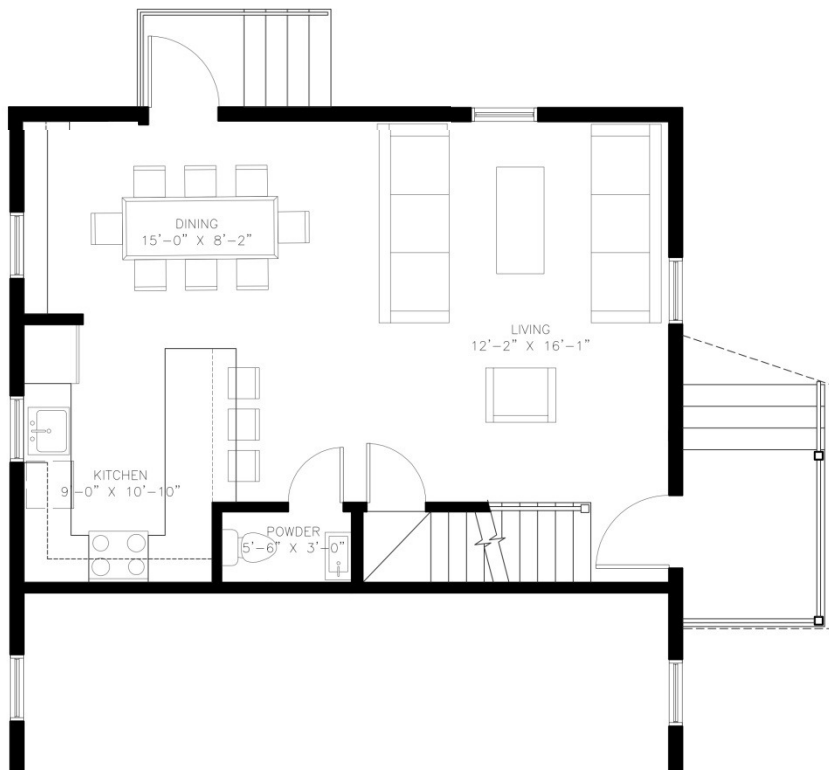
- 2,021 SF on 4 Levels; 100+SF Private Deck
- 3 Bed, 3.5 Bath
- Living Space on 3 Levels
- Flexible Den/Office/Studio in Basement

117 Pleasant Street | Cambridge, MA
February 23, 2018

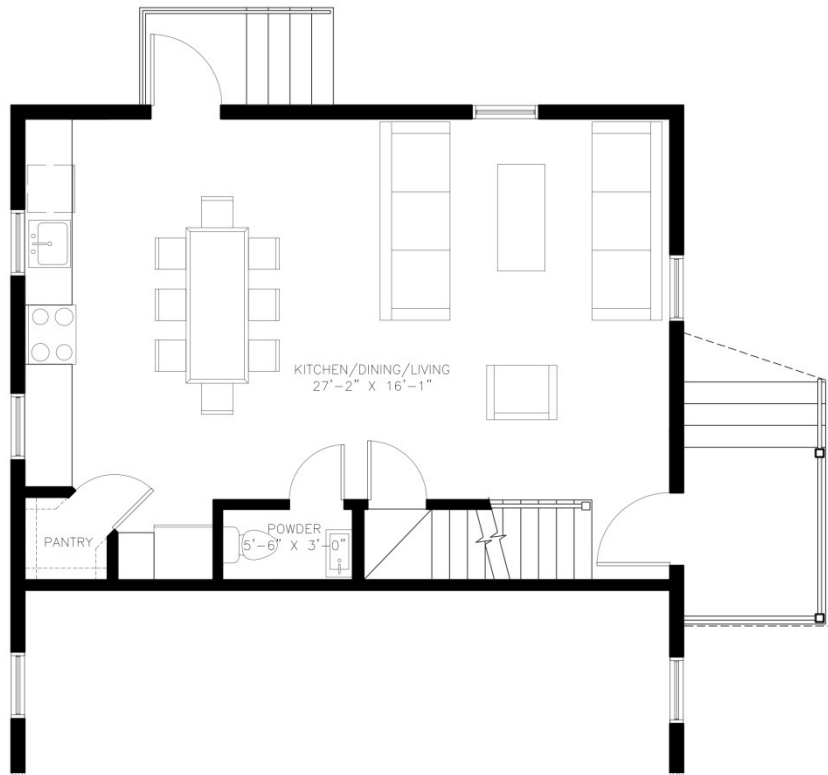




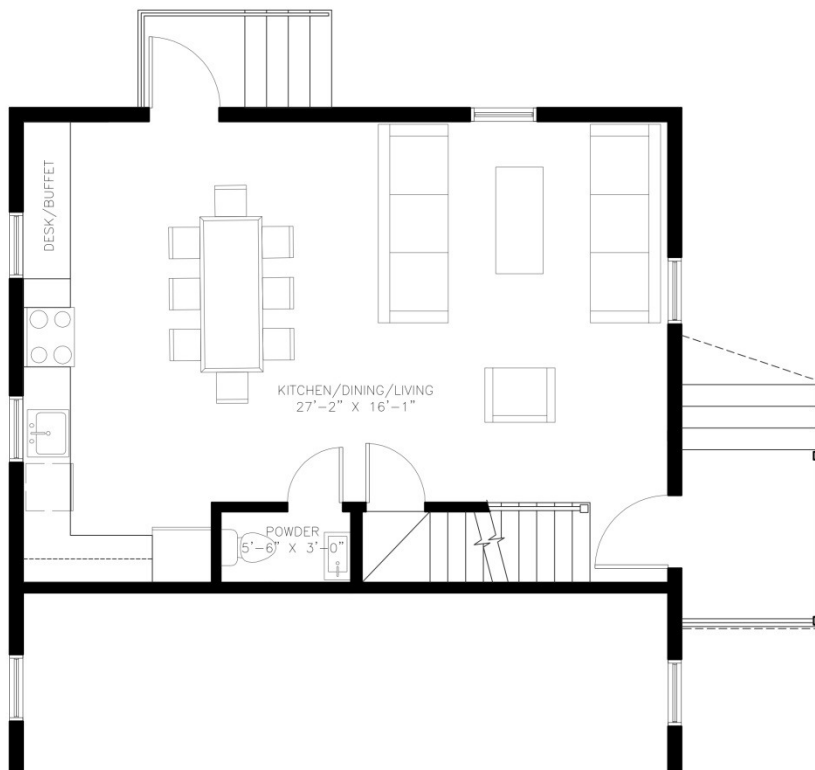
FIRST FLOOR ALTERNATIVE A **shown on unit plans*



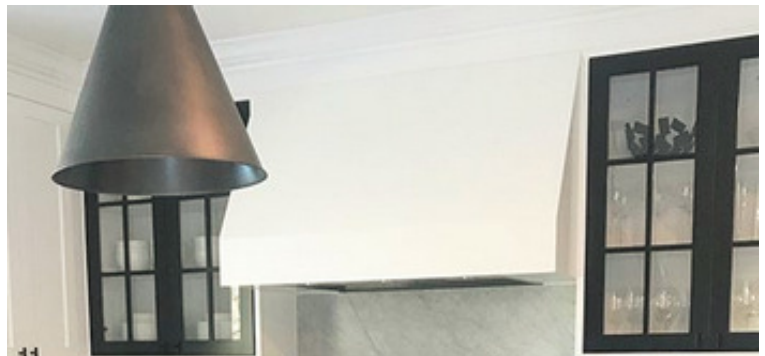
FIRST FLOOR ALTERNATIVE B



FIRST FLOOR ALTERNATIVE C



FIRST FLOOR ALTERNATIVE D

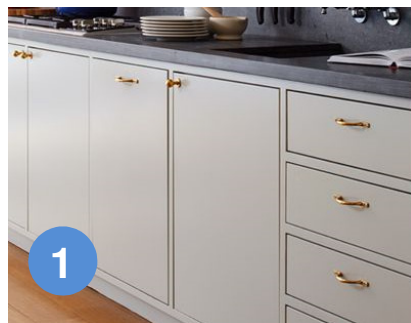
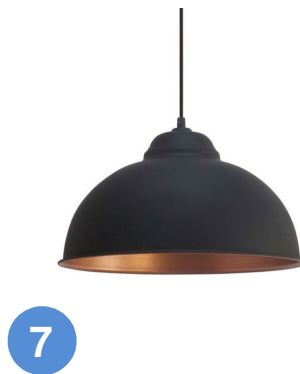
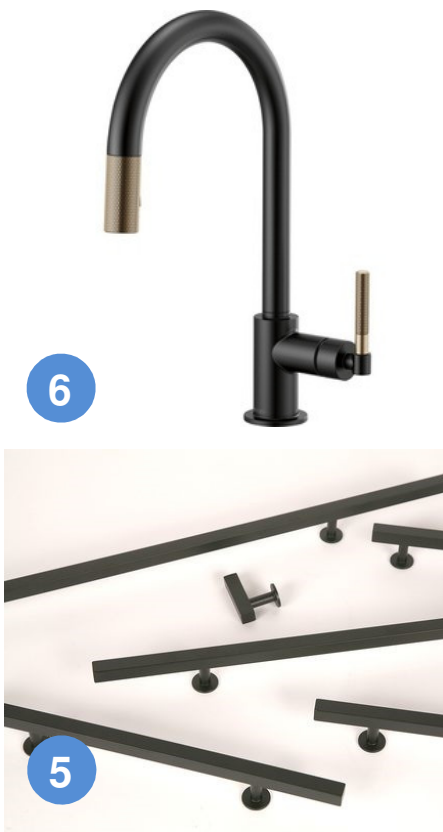
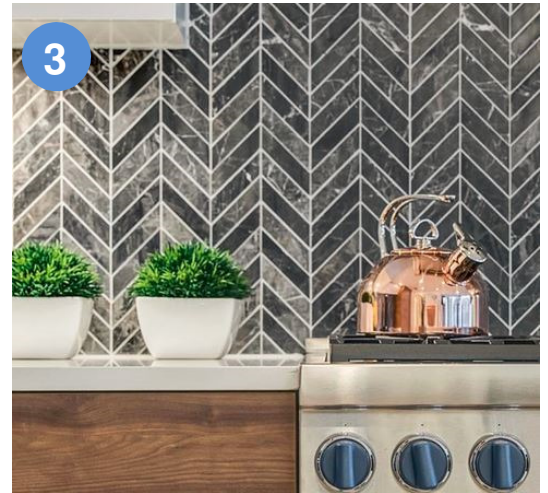
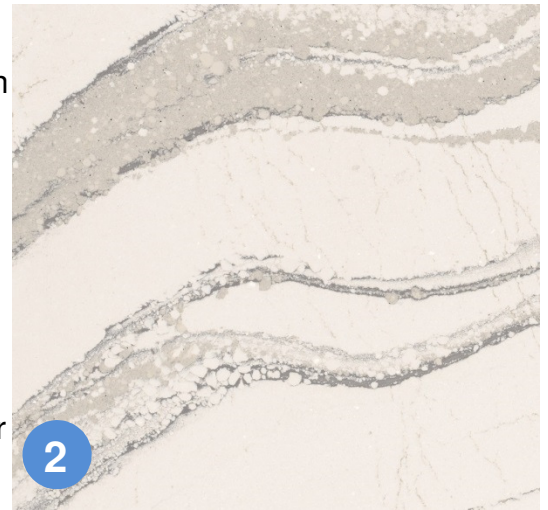


KITCHEN INSPIRATION

117 Pleasant Street | Cambridge, MA
February 23, 2018



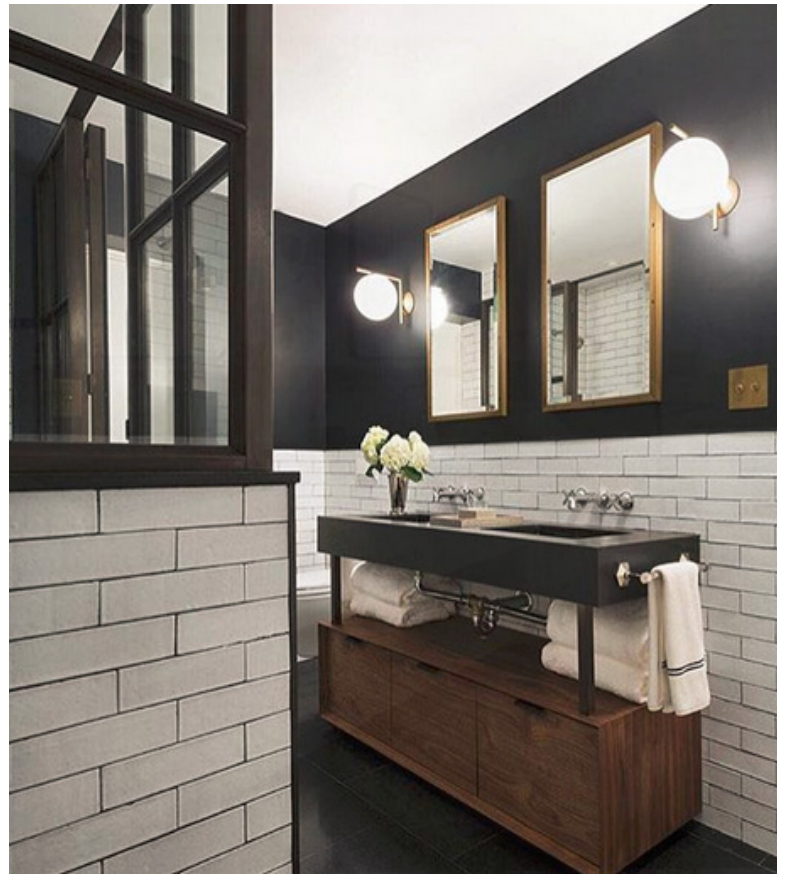
1. CABINETS – Showplace, Pendleton or Milan Inset in Graphite, Oyster
2. COUNTERS – Cambria, Britannica Series, Marble
3. BACKSPLASH – Ann Sacks, Helena Arrow Mosaic
4. APPLIANCES
 1. Range – Wolf GR366, 6 Burner Gas Range
 2. Hood – Wolf VW36S, 36" Wall Hood
 3. Refrigerator – SubZero BI-36UFD, 36"
 4. Dishwasher – Bosch, 800 Series 24" Bar Handle
 5. Wine fridge – SubZero, 424 G/O 24" undercounter
5. HARDWARE – Lewis Dolin, Bar Series in Matte Black
6. FIXTURES – Brizo, Litze in Matte Black, Brilliance Gold
7. LIGHTING
 1. Recessed and undercounter - TBD
 2. Pendant – Eglo Truro 2 Pendant



KITCHEN FINISHES/SPECIFICATIONS

117 Pleasant Street | Cambridge, MA
February 23, 2018



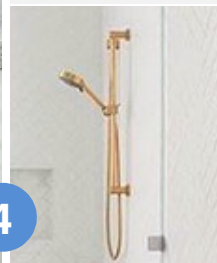
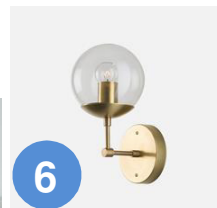
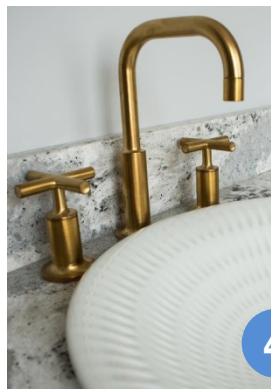
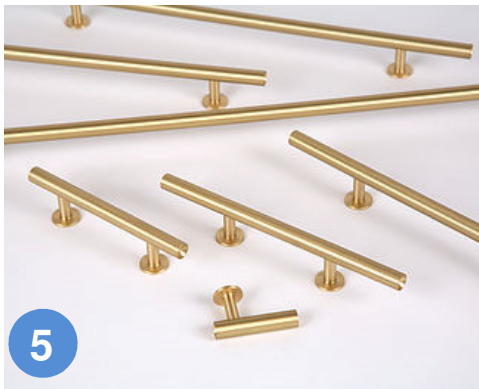


BATHROOM INSPIRATION

117 Pleasant Street | Cambridge, MA
February 23, 2018

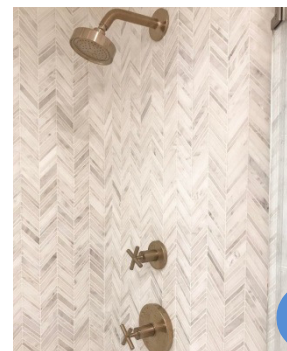
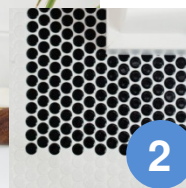
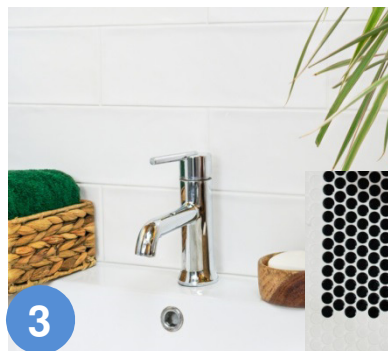
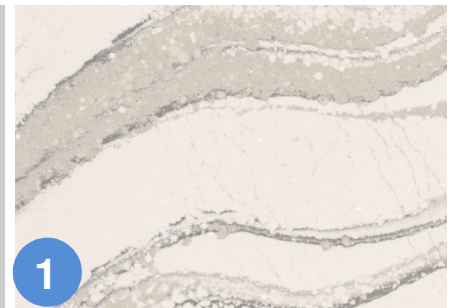
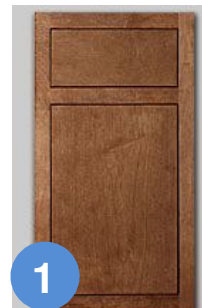


1. VANITY – Showplace, Pendleton Inset in Graphite; Cambria Clareanne Series, Marble
2. FLOOR TILE – Tile Bar, Highland Blossom
3. WALL TILE– Tile Bar, Lori Dennis – Mesa Azure 5x12
4. FIXTURES
 1. Toilet – Kohler Persuade
 2. Shower Valve – Kohler Purist in Brushed Gold
 3. Faucet – Kohler Purist in Brushed Gold
5. HARDWARE – Lewis Dolin, Round Bar Series in Brass
6. LIGHTING
 1. Vanity – Schoolhouse Electric, Ellerbe Sconce – Natural Brass
 2. Overhead - TBD



MASTER BATH FINISHES/SPECIFICATIONS

1. VANITY – Showplace, Milan Inset in White Oak; Cambria, Britannica Series, Marble top
2. FLOOR TILE –Tile Bar, Eden Penny in Black
3. WALL TILE– Tile Bar, Santa Monica 4x12 in white
4. FIXTURES
 1. Toilet – Kohler Persuade
 2. Shower Valve – Kohler Purist in Brushed Nickel
 3. Faucet – Kohler Purist in Brushed Nickel
5. HARDWARE – Lewis Dolin, Bar Series Brushed Nickel
6. LIGHTING
 1. Vanity – CB2
 2. Overhead - TBD

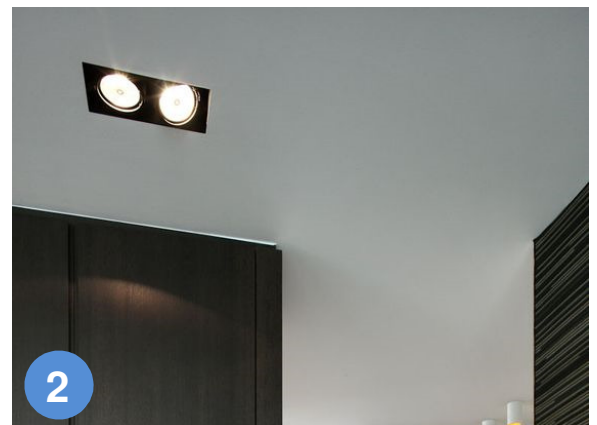
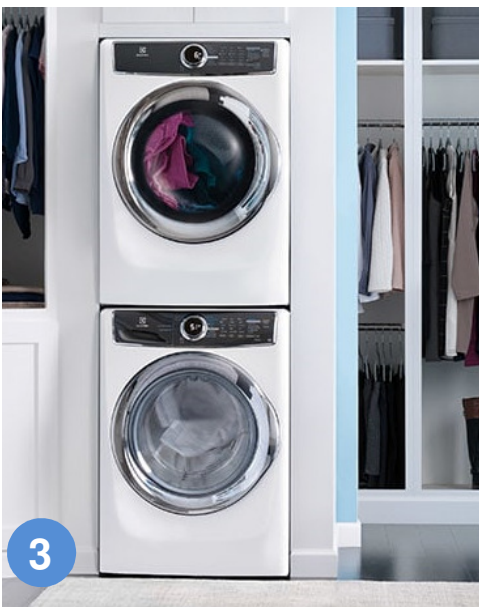


BATH FINISHES/SPECIFICATIONS

117 Pleasant Street | Cambridge, MA
February 23, 2018



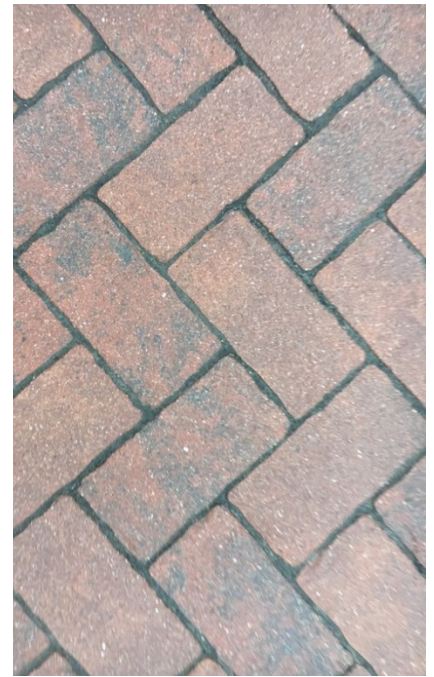
1. FLOORS – PID Floors, Engineered White Oak, Natural Matte Finish 5"
2. LIGHTS – Modular trimless recessed LED lighting
3. WASHER/DRYER – Electrolux Steam Washer/Dryer
4. DOORS – Simpson 7' solid core two panel door; Sargent, Studio Collection Centro Series in Satin Nickel
5. MOULDINGS – 6" baseboards, 4" window/door casing



OTHER UNIT FINISHES

117 Pleasant Street | Cambridge, MA
February 23, 2018





EXTERIOR FINISHES

117 Pleasant Street | Cambridge, MA
February 23, 2018



Obadiah Arthur, RCG
oarthur@rcg-llc.com
617-625-7764

CONTACT/QUESTIONS

117 Pleasant Street | Cambridge, MA
February 23, 2018

